

# MTL1000

## Common Specifications

### Terminals

Accept conductors of up to 2.5mm<sup>2</sup> stranded or single-core

### Power supply voltage,

18V to 32V DC SELV

### Isolation

50V ac or dc between power, field and system circuits.  
(tested to 840Vrms)

### Location of units

Safe area

### Mounting

T-section 35mm DIN rail (7.5mm or 15mm) to EN 50022

### Ambient temperature limits

-20 to +60°C (-6 to +140°F) operating  
-40 to +80°C (-40 to +176°F) storage

### Humidity

5 to 95% relative humidity

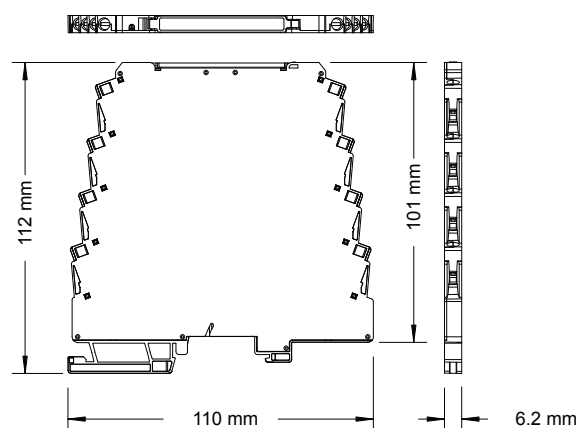
### Weight

120g

### EMC

EN61326 and NE21 \*

### Dimensions



\*For 20mS power interruption compliance a suitable power supply must be used.

### Accessories

#### PBUS6.2

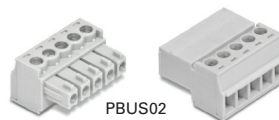
DIN rail power bus connector for 2 module positions (pack of 10)  
Required for all powered modules, must be ordered separately.



PBUS6.2

#### PBUS02

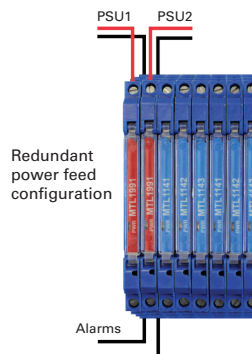
Power bus, direct connection terminals (1 set)  
Used for a single power supply feed directly into the power bus. Max current capacity 8A  
(Typically 150 modules)



PBUS02

#### MTL1991

Power feed and alarm module (see separate specification sheet. For single or dual power feeds with power monitor alarm. Maximum load 1A (typically 20 modules)

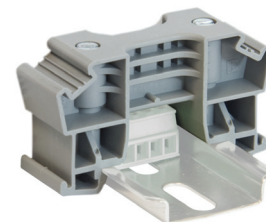


Redundant power feed configuration

Alarms

#### PBUS03

Module end stop clamp



PBUS03



**Eaton Electric Limited,**  
Great Marlings, Butterfield, Luton  
Beds, LU2 8DL, UK.  
Tel: + 44 (0)1582 723633 Fax: + 44 (0)1582 422283  
E-mail: mtlenquiry@eaton.com  
www.mtl-inst.com

© 2016 Eaton  
All Rights Reserved  
Publication No. EPS 1000 rev 5 230916  
September 2016

**EUROPE (EMEA):**  
+44 (0)1582 723633  
mtlenquiry@eaton.com

**THE AMERICAS:**  
+1 800 835 7075  
mtl-us-info@eaton.com

**ASIA-PACIFIC:**  
+65 6 645 9888  
sales.mtlsing@eaton.com

The given data is only intended as a product description and should not be regarded as a legal warranty of properties or guarantee. In the interest of further technical developments, we reserve the right to make design changes.